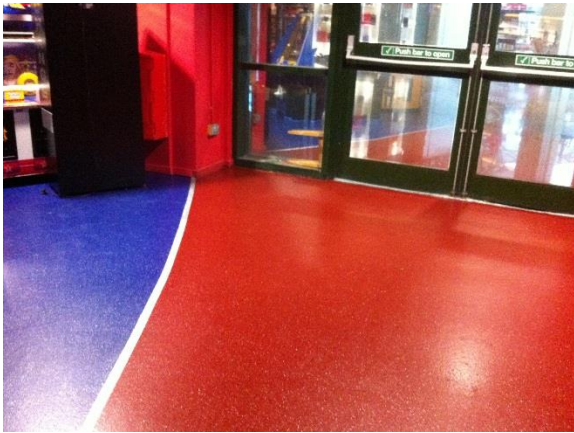


## Ryedec



### Epoxy Resin Floor - FeRFA Type 5

Flow applied flooring – 2mm to 3mm

#### Description

Ryedec is an attractive decorative seamless floor and wall finish produced by the combination of an epoxy resin base coat, coloured plastic flakes and clear polyurethane finish coats. The overall finish is a mottled mosaic effect with a slightly uneven slip resistant surface.

#### ADVANTAGES & BENEFITS

- ✓ Abrasion Resistance
- ✓ Easily Cleaned
- ✓ Attractive
- ✓ Medium Duty
- ✓ Decorative
- ✓ Rapid curing range is also available

#### TYPICAL AREA OF USE

- ✓ Toilets
- ✓ Laboratories
- ✓ Hospitals
- ✓ Reception Areas
- ✓ Offices
- ✓ Retail Environments
- ✓ Kitchens
- ✓ Veterinary clinics

#### TECHNICAL DATA (N/mm<sup>2</sup>)

Compressive Strength	36
Flexural Strength	30
Slant Shear Bond Strength	29
Elastic Modulus	3k
Flame Spread (BS476 Part 7)	Class 2
Thermal Cycle 14 days -40°C to 100°C	
Showed no debonding or stress at 24 hours cycle	Medium
Slip	

#### Composition

Solvent free epoxy resins, 2-4mm plastic flakes and clear epoxy and polyurethane seals.

#### Appearance

Ryedec is supplied in a range of attractive colour mixes.

#### Chemical Resistance

Please refer to technical data sheet on "Ryedec DD Chemical Resistance" TD112.

#### Durability

Ryedec exhibits the highest order of abrasion resistance, giving long term service and durability.

#### Thickness

1-4mm

#### Colours Available

A range of attractive colour mixes are available, please contact our Sales Team for a colour chart.

## Ryedec

### Substrates

Concrete, Grano, screeds, marine ply.

### Surface Preparation

To be assured of maximum adhesion and properties from Ryebrook resin products, the correct surface preparation is essential. Please refer to technical data sheet "Surface Preparation" reference TD102.

### Application Conditions

15-30°C.

### Application

Ryedec is produced by the combination of different Ryebrook resin products. The products used depend on the thickness required.

### Coverage Rates

Ryedec 1000 (Nominal 1mm)

- |    |                                      |       |
|----|--------------------------------------|-------|
| 1. | Ryepime SF @ 300g/m <sup>2</sup>     | TD002 |
| 2. | Ryetech at 600g/m <sup>2</sup>       | TD022 |
| 3. | Ryedec Flakes at 600g/m <sup>2</sup> |       |
| 4. | Ryetech Clear at 300g/m <sup>2</sup> | TD022 |
| 5. | Ryedur DD at 100g/m <sup>2</sup>     | TD054 |

Ryedec 2500 (Nominal 2.5mm)

- |    |                                      |       |
|----|--------------------------------------|-------|
| 1. | Ryepime SF @ 300g/m <sup>2</sup>     | TD002 |
| 2. | Ryeflow 2000 at 3.2kg/m <sup>2</sup> | TD031 |
| 3. | Ryedec Flakes at 600g/m <sup>2</sup> |       |
| 4. | Ryetech Clear at 300g/m <sup>2</sup> | TD022 |
| 5. | Ryedur DD at 100g/m <sup>2</sup>     | TD054 |

Ryedec 4000 (Nominal 4mm)

- |    |  |       |
|----|--|-------|
| 1. | Ryepime SF @ 300g/m <sup>2</sup>       | TD002 |
| 2. | Ryeflow 3000 at 5.33kg/m <sup>2</sup>  | TD031 |
| 3. | Ryedec Flakes at 600g/m <sup>2</sup>   |       |
| 4. | Ryetech Clear at 300g/m <sup>2</sup>   | TD022 |
| 5. | Ryedur DD Clear at 100g/m <sup>2</sup> | TD054 |

Ryedec V

- |    |  |       |
|----|--|-------|
| 1. | Ryetech 'V' at 200g/m <sup>2</sup>       | TD053 |
| 2. | Ryetech 'V' at 200g/m <sup>2</sup>       | TD053 |
| 3. | Ryedec Flakes at 600g/m <sup>2</sup>     |       |
| 4. | Ryetech 'V' Clear at 300g/m <sup>2</sup> | TD022 |
| 5. | Ryedur DD Clear at 100g/m <sup>2</sup>   | TD054 |

Depending on type of finished required Ryetech Clear (4) may be replaced by Ryedur DD at 200g/m<sup>2</sup> to produce a more textured surface.

Alternatively, where solvent based products are not permitted Ryetech Clear or Ryetech 'V' Clear may be specified in place of Ryedur DD.

### Specification Detail

For simplification, please specify Ryedec as "Ryedec composition flooring ... nominal thickness" or "Ryedec 'V' wall finish at a nominal 1mm".

### Maintenance

Providing contamination is not allowed to build up, regular scrubbing and mopping will maintain Ryedec floors satisfactorily. Ryedec floors may be polished back to the original gloss in a similar same way as vinyl or lino.

### Health and Safety

Please read technical data sheet reference TD103 and specific health and safety data for this product provided in compliance with the requirements of EC Directive 91/155.

### Storage, Mixing and Application

The storage, mixing and application conditions can affect the quality of the finish produced. Please read technical data sheet reference TD104.

### Further Technical Advice

For further information on this or any other Ryebrook product, please contact our Technical Department on 01634 957520 or email [info@ryebrook.co.uk](mailto:info@ryebrook.co.uk)